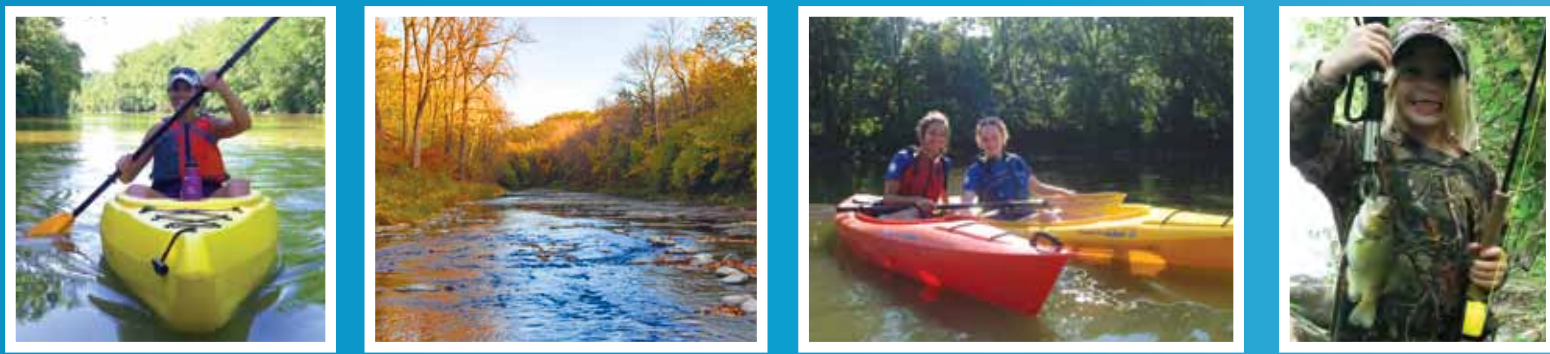
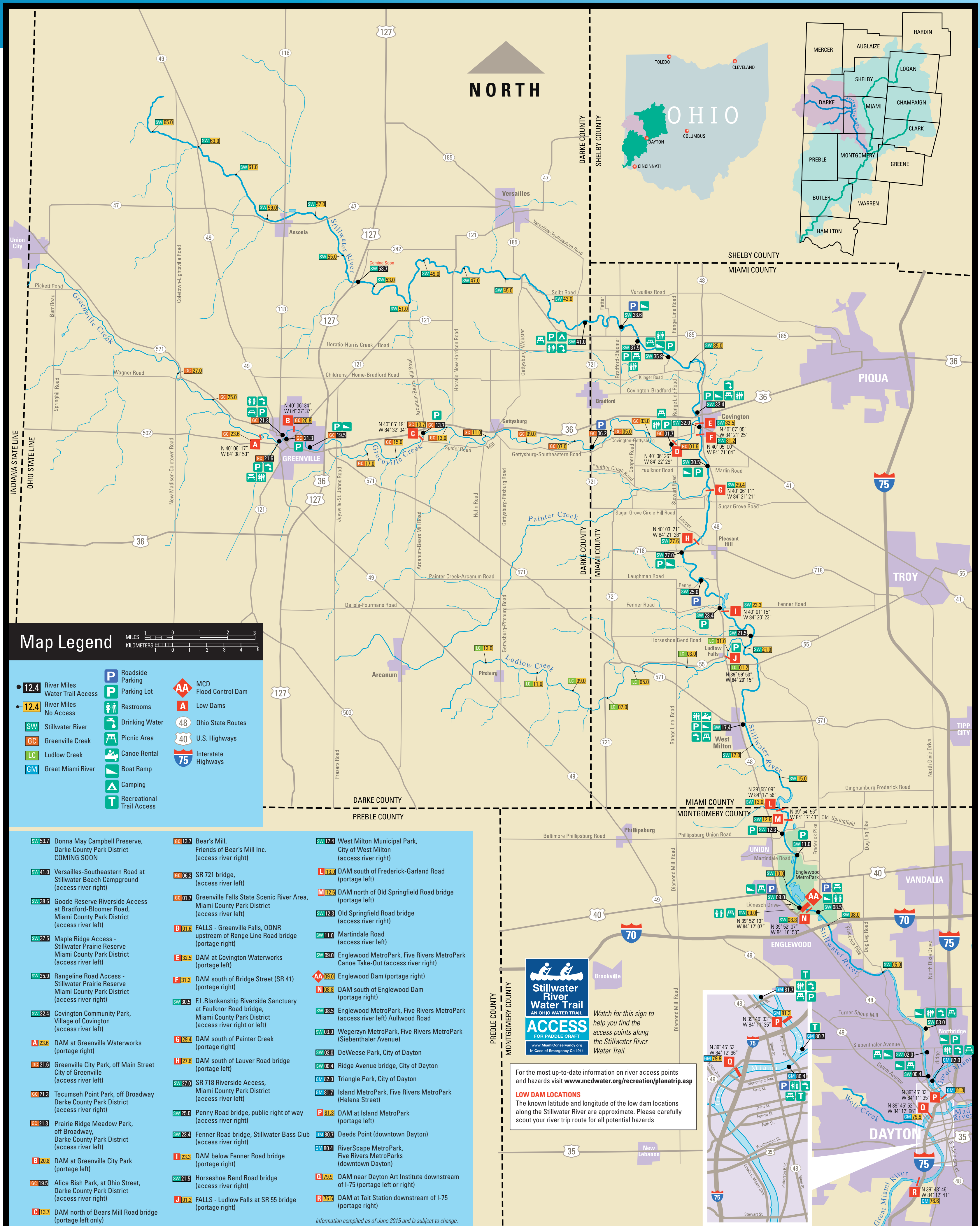


Stillwater River Water Trail



Our rivers and streams offer wonderful opportunities for recreation, from kayaking and canoeing to fishing and wildlife watching. But it's important to learn how to enjoy them safely. Review the information on the reverse side to make sure your next outing on the Stillwater River Water Trail is a safe and fun adventure.



Stillwater River Water Trail
AN OHIO WATER TRAIL
ACCESS FOR PADDLE CRAFT
FOR PADDLE CRAFT
www.miamiconservancy.org
In Case of Emergency Call 911

Watch for this sign to help you find the access points along the Stillwater River Water Trail.

For the most up-to-date information on river access points and hazards visit www.mcdwater.org/recreation/planatrip.asp

LOW DAM LOCATIONS
The known latitude and longitude of the low dam locations along the Stillwater River are approximate. Please carefully scout your river trip route for all potential hazards

- SW 53.7** Donna May Campbell Preserve, Darke County Park District (access river right)
- SW 41.0** Versailles-Southeastern Road at Stillwater Beach Campground (access river right)
- SW 38.6** Goode Reserve Riverside Access at Bradford-Bloomer Road, Miami County Park District (access river left)
- SW 37.5** Maple Ridge Access - Stillwater Prairie Reserve Miami County Park District (access river left)
- SW 35.9** Rangeline Road Access - Stillwater Prairie Reserve Miami County Park District (access river right)
- SW 32.4** Covington Community Park, Village of Covington (access river left)
- A 23.6** DAM at Greenville Waterworks (portage right)
- GC 21.6** Greenville City Park, off Main Street City of Greenville (access river left)
- GC 21.3** Tecumseh Point Park, off Broadway Darke County Park District (access river right)
- GC 21.3** Prairie Ridge Meadow Park, off Broadway, Darke County Park District (access river left)
- B 20.8** DAM at Greenville City Park (portage left)
- GC 19.5** Alice Bish Park, at Ohio Street, Darke County Park District (access river right)
- C 13.7** DAM north of Bears Mill Road bridge (portage left only)
- GC 13.7** Bear's Mill, Friends of Bear's Mill Inc. (access river right)
- GC 06.2** SR 721 bridge, (access river left)
- GC 01.7** Greenville Falls State Scenic River Area, Miami County Park District (access river left)
- D 01.6** FALLS - Greenville Falls, ODNR upstream of Range Line Road bridge (portage right)
- E 22.5** DAM at Covington Waterworks (portage left)
- F 31.2** DAM south of Bridge Street (SR 41) (portage right)
- SW 30.5** F.L. Blankenship Riverside Sanctuary at Faulkner Road bridge, Miami County Park District (access river right or left)
- G 28.4** DAM south of Painter Creek (portage right)
- H 27.6** DAM south of Lauver Road bridge (portage left)
- SW 27.0** SR 718 Riverside Access, Miami County Park District (access river left)
- SW 25.0** Penny Road bridge, public right of way (access river right)
- SW 23.4** Fenner Road bridge, Stillwater Bass Club (access river right)
- I 23.3** DAM below Fenner Road bridge (portage right)
- SW 21.5** Horseshoe Bend Road bridge (access river right)
- J 01.2** FALLS - Ludlow Falls at SR 55 bridge (portage right)
- SW 17.4** West Milton Municipal Park, City of West Milton (access river right)
- L 13.0** DAM south of Frederick-Garland Road (portage left)
- M 12.8** DAM north of Old Springfield Road bridge (portage left)
- SW 12.3** Old Springfield Road bridge (access river right)
- SW 11.0** Martindale Road (access river left)
- SW 09.0** Englewood MetroPark, Five Rivers MetroPark Canoe Take-Out (access river right)
- AA 09.0** Englewood Dam (portage right)
- N 08.8** DAM south of Englewood Dam (portage right)
- SW 08.5** Englewood MetroPark, Five Rivers MetroPark (access river left) Aullwood Road
- SW 03.0** Wegerzyn MetroPark, Five Rivers MetroPark (Siebenthaler Avenue)
- SW 02.0** DeWeese Park, City of Dayton
- SW 00.4** Ridge Avenue bridge, City of Dayton
- GM 02.0** Triangle Park, City of Dayton
- GM 01.7** Island MetroPark, Five Rivers MetroPark (Helena Street)
- P 01.3** DAM at Island MetroPark (portage left)
- GM 00.7** Deeds Point (downtown Dayton)
- GM 00.4** RiverScape MetroPark, Five Rivers MetroParks (downtown Dayton)
- Q 79.9** DAM near Dayton Art Institute downstream of I-75 (portage left or right)
- R 76.6** DAM at Tait Station downstream of I-75 (portage right)

Information compiled as of June 2015 and is subject to change.