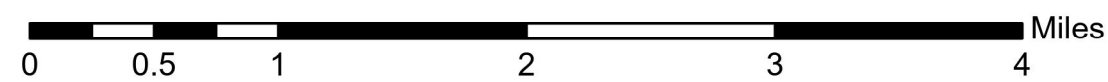
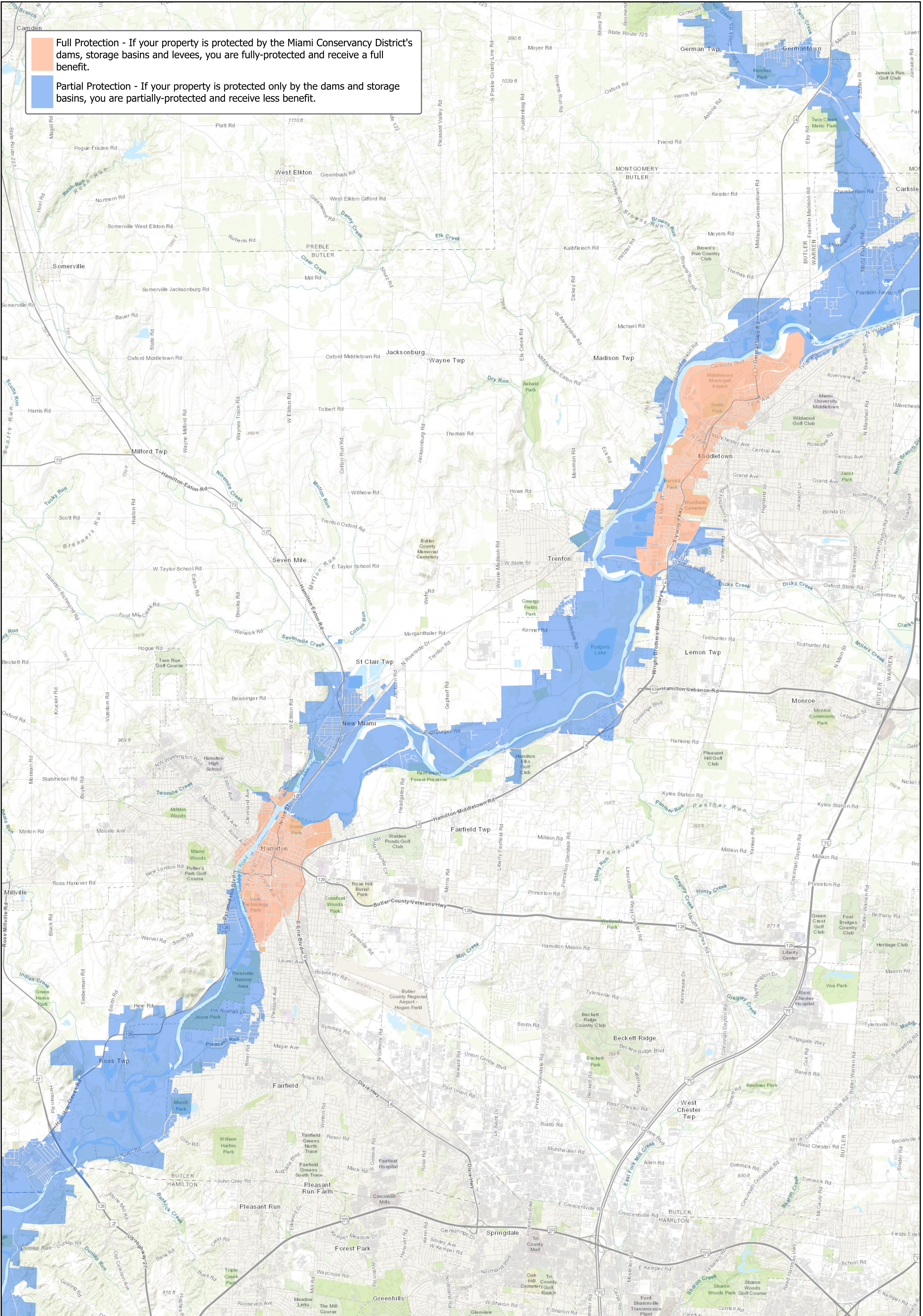


Flood Protection System Reduced Flood Risk Areas

Butler County Full and Partial Protection Parcels

Full Protection - If your property is protected by the Miami Conservancy District's dams, storage basins and levees, you are fully-protected and receive a full benefit.

Partial Protection - If your property is protected only by the dams and storage basins, you are partially-protected and receive less benefit.



For more information visit <https://mcdwater.org/>